



# Briefing team managers Zolder Terlaemen Cups



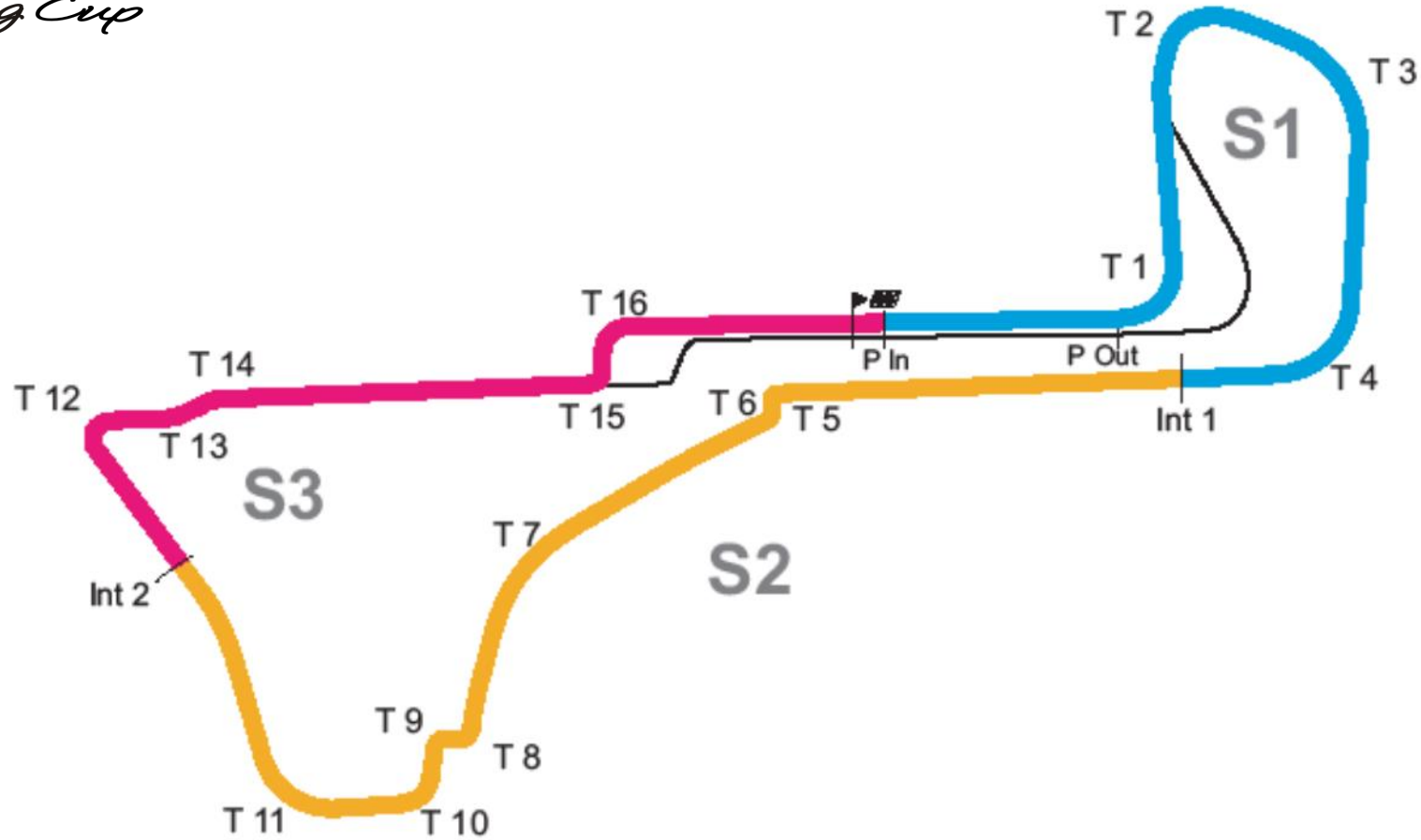
# FULL RESPECT

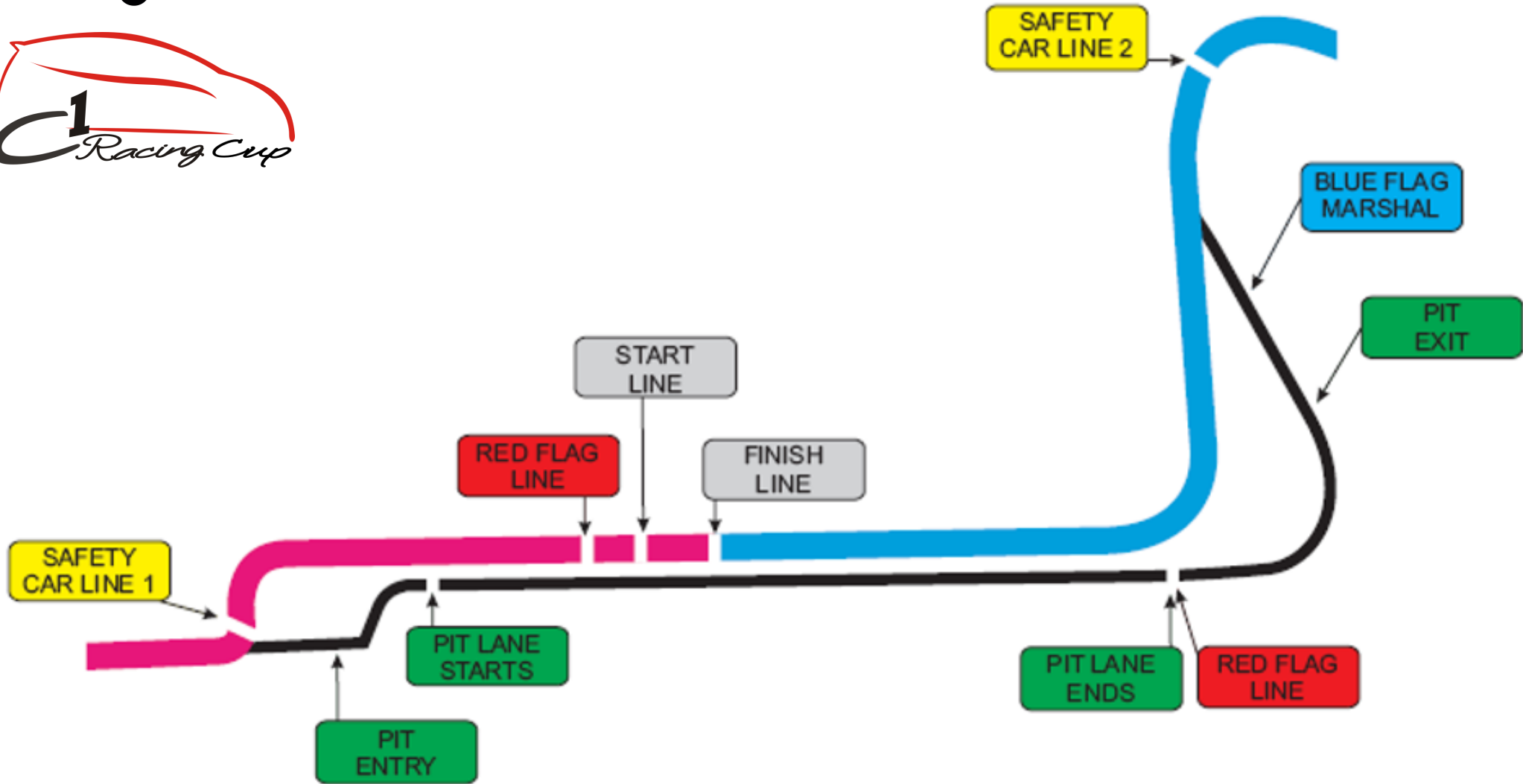
*Never Forget* without the marshals you don't get to race!





—▲	Start Line
▨	Finish "Line"
Start Line Offset	-9,5 m
Int 1 = @	1,366 Km
Int 2 = @	2,851 Km
Circuit Centerline	4,000 Km
Pit in @	0,000 Km
Pit out @	0,284 Km
Pit in to Pit out	0,290 Km
A lap by the Pits	4,108 Km
T = Turn Number	S = Sector





# Timing Saturday

- 14h55 – 15h55: Qualifying

# Timing Sunday

## *Warm up*

- 10h00 – 10h15

## *Race*

- 10h36: 10 min board, pit open
- 10h41: 5 min board, pit closed
- 10h43: 3 min board
- 10h45: 1 min board, end of motor silence
- 10h46: green flag, start formation lap
- 10h50: start of the race



# Control & Finishline



# Pits entry







Blue flag @pits exit



Pits exit line





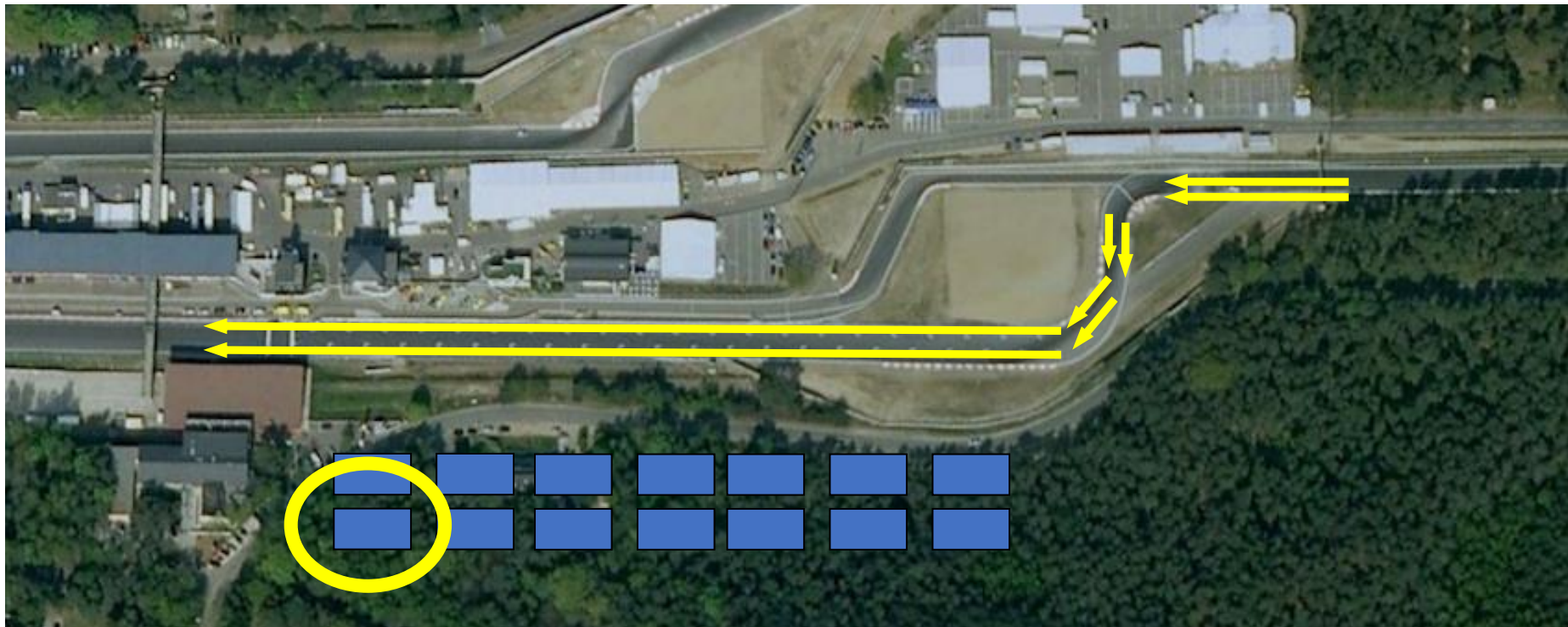
# **Startprocedure**

- *During the formation lap: NO tyres warming (zig-zag) from T10*
- *Ligning up from T12*



# ROLLING START

Pole Posn  
Left  
Hand  
Side





# Start Procedure Rolling Start



# Start Procedure



Overtaking allowed from the moment the red light is off



## *End of race*



- *Slow down after passing chequered flag.*
- *One deceleration lap, come into pitlane*
- *Some cars will be stopped for the podium and parc fermé.*
- *Other cars drive to the garage, parc fermé conditions, doors stay open. Nobody touches the car.*



**SC POSITION DURING THE RACE**




# Safety Car Procedure



Under safety car procedure allways follow the SC when the lights are on.

Even if the SC is going by the pitlane or takes an escape road.

At the end of the SC procedure, no overtaking before control line.

A long, straight asphalt path leads through a fenced-in area, likely a sports field or training ground. The path is flanked by a chain-link fence topped with a dark mesh. On the left, there are several tall, slender light poles. The trees are mostly bare, with some showing autumn-colored leaves. The sky is overcast with grey clouds. In the distance, a white gate or barrier is visible at the end of the path.

*SC lights "off"  
Before T 12  
Medical centre*

# ***FULL COURSE YELLOW***

- Countdown on the team radio
- Boards will be shown by the Marshalls at the 10 sec signal – no overtaking
- Flags will be shown at the end of the countdown. All cars at 60km/h
- Can be followed by a SC procedure

# ***Pitstop during SC or FCY procedure***

- A pitstop during a SC or FCY procedure must take at least 40 sec, between line pit in and pit out

# *Escape road – Turn 12*







ENJOY  
YOUR APERITIVO  
..WITH..

MARTINI<sup>®</sup>

Martini  
e Tonic

50% MARTINI  
50% TONIC WATER



*Yellow flashing lights after first chicane*

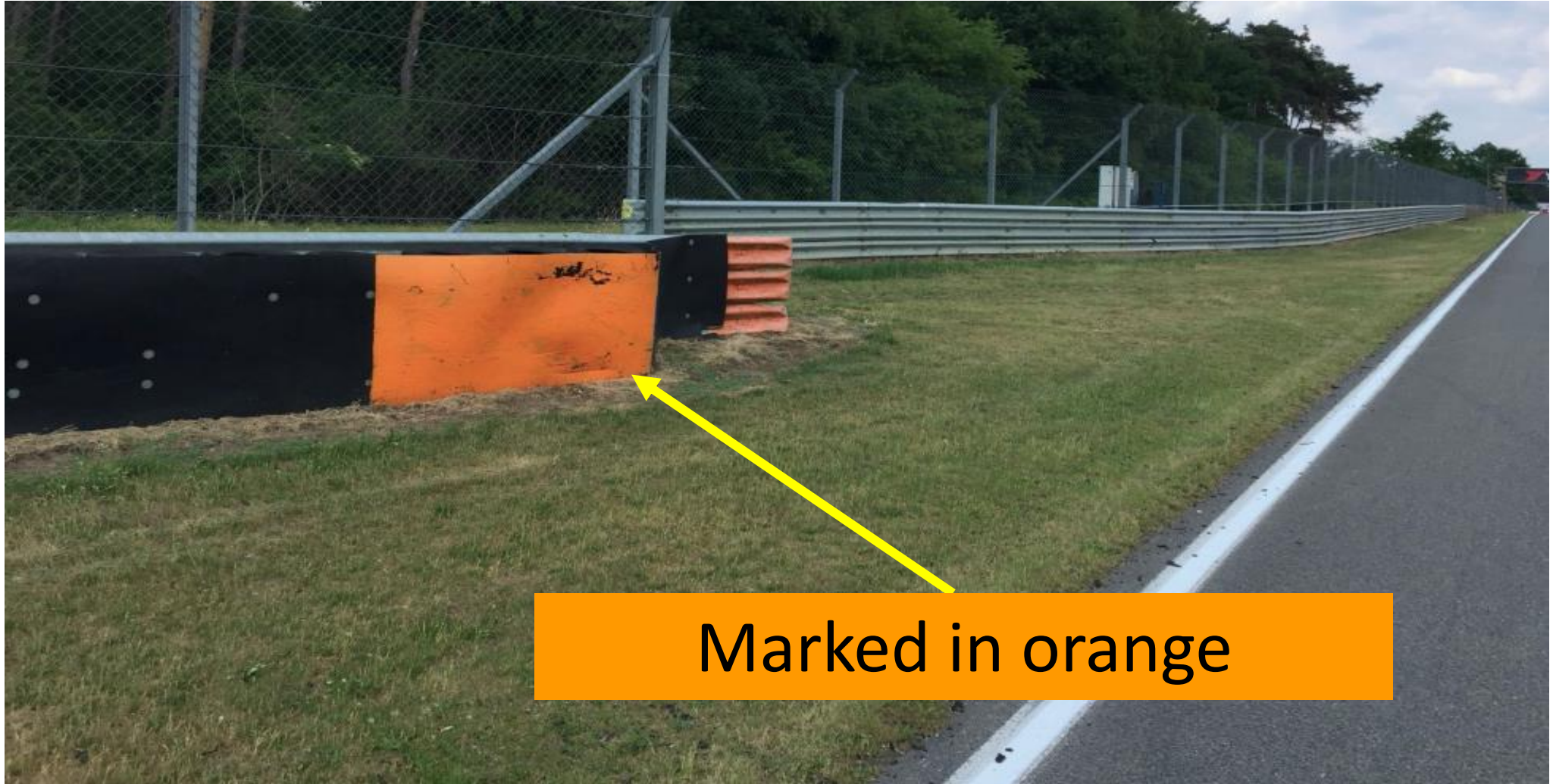
# Track limits



*T5 – T6 Chicane and T9 – Villeneuve-Chicane*

*Allowed to cross the white line but not to go on the green*

## OPENING FOR CARS



Marked in orange



*Signalling area*

**uhoda**

**Chrisal**  
PROBIOTIC HYGIENE & PERSONAL CARE

**Chrisal**  
PROBIOTIC HYGIENE & PERSONAL CARE

**KURINA**  
PROBIOTIC AIRCO CLEANER

**Auto 5**  
WWW.KURINA.BE

**WORLD ON WHEELS**  
@Circuit Zolder

**WOW @Circuit Zolder**



*Stop & go  
Time penalty area*



- Keep in mind that the RaceFlag system is mandatory in all cars !
  - Without the system correctly connected, cars will not go on track
  
  - Pour mémoire le système RaceFlag est obligatoires dans toutes les voitures !
  - A défaut d'installation correcte les véhicules ne seront pas autorisé à prendre la piste
  
  - **Track Marshals' flags remain priority**
  - **Les drapeaux des commissaires restent prioritaires**
-

## Session Flags

- Displayed in the sector of the incident
- Inform you about potential danger
- Are an onboard replica of the track Marshals' flags



## Drapeaux de Session

S'affichent dans le secteur de l'incident

Vous informent d'un danger potentiel

Sont une réplique embarquée des drapeaux des commissaires de piste



## Car Flags

- Specific to YOUR car
- Will be shown anywhere on track
- Will display information for a defined period of time
- Penalties flags are displayed until they have been executed



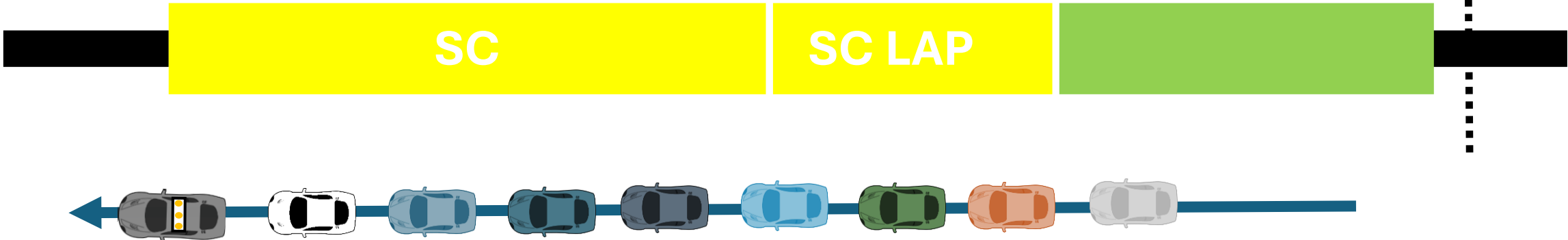
## Drapeaux de Voitures

Spécifiques à VOTRE véhicule

S'affiche où que vous soyez sur la piste

S'affiche pour une période définie

Les pénalités s'affichent tant qu'elles n'ont pas été exécutées



## Track Limits

- Indicates the turn where the event occurred
- Detected by the track cameras or the track Marshals
- RaceFlag memorize the occurrences and will propose penalties if event reoccurs above the set limit



## Limites de piste

Vous indique le virage dans lequel la limite n'a pas été respectée

Les informations sont remontées par les cameras ou les commissaires de piste

RaceFlag proposera des pénalités en cas de récurrence d'événements au delà du maximum autorisé

## Messaging

Global messaging such as :

- Session information
- Pit Open / Closed
- Refuelling windows

Car Messaging

- Instructions to the driver
- Reminders...



## Messagerie

Messages généraux :

Informations sur la session  
Ouverture de pit-lane...  
Fenêtres de ravitaillement

Messages par voiture

Recommandations au pilote  
Rappels...

---

## Procédure de démarrage :

### 30 minutes AVANT la Pré-grille

- Pression longue sur l'interrupteur
- Le boîtier vibre
- L'écran s'allume
- Après 2 minutes, l'écran affiche le N° de la voiture

## Start Process :

### 30 minutes BEFORE Pre-grid

- Long press on the power switch
- Device vibrates
- Screen lights up
- After 2 min the screen will show the Car number

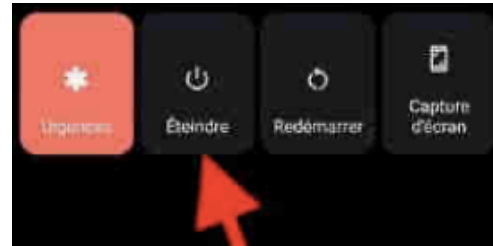


### Extinction :

- Pression longue sur l'interrupteur
- Appuyer sur le bouton « Eteindre »
- L'écran s'éteint

### Powering Off :

- Long press on the power switch
- Press the « Eteindre » button
- Screen turns off

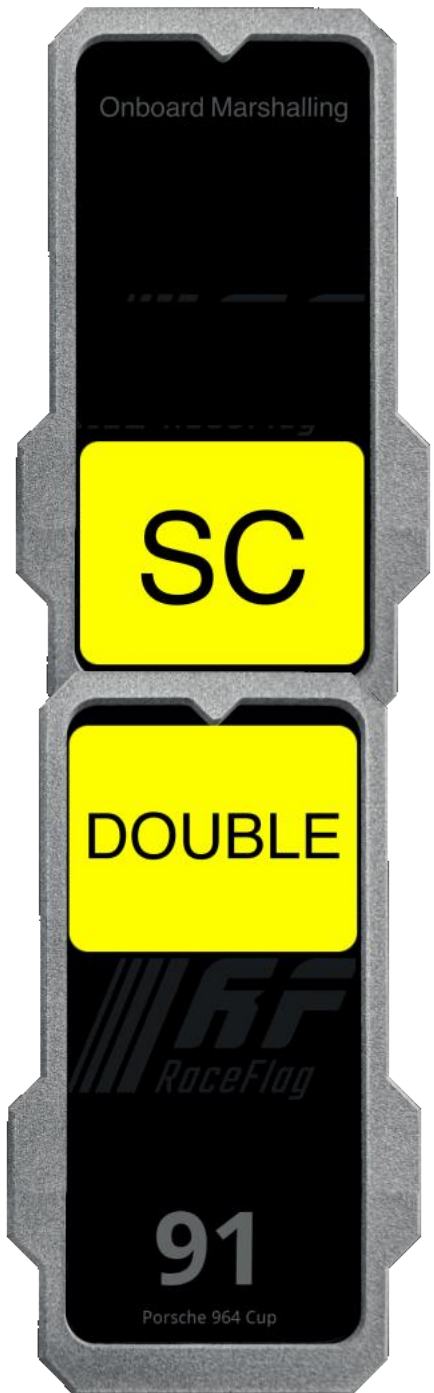


INTERUPTEUR  
Power Switch

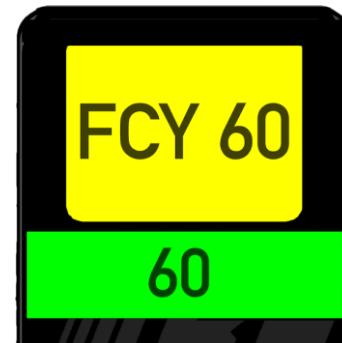
ALIMENTATION  
Power Supply

# RaceFlag Logo's











Safety Car



## Some reminders



- Cars have to be pushed in and out of the garages.
- No visitors or VIP's in the working lane, stay behind the red line.
- Motor Silence:
  - Saturday: before 09h00; 12h00 – 13h00; after 18h00
  - Sunday: before 10h00; after 18h00



## Radio communication from RC to the teams

- We have one way system of communication from RC to the teams.
- What will be communicated? Start of SC and FCY, oil or debris on track, slow cars, other incidents on track. All urgent messages to the teams.

Messages by radio have the same value as messages on the screen.



## Radio communication from RC to the teams

- Frequencie Teams is 455,4625 code 110,9
- Teams only receiving, no transmitting.

# ALCOHOL AND DOPING



1. Alcohol tolerance is 0
2. Check 3 hours > session < 30' after
3. Be aware of the Anti-doping regulations
4. Check the FIA web site

*Have a FANTASTIC race!*



